

ACCU-Beam® DIGITAL PRODUCTS

Universal Digital Camera Adaptors

25701105



C-Mount Adaptor (43mm).....\$ 585.00

8102257



Zeiss® OPMI®/Slit Lamp Adaptor (37mm)..\$ 1,990.00

8102259



Zeiss® OPMI®/Slit Lamp Adaptor (43mm)..\$ 1,990.00

8191258



Dual Adaptor: Video & Universal Digital Camera Adaptor (43mm).....\$ 2,650.00

Coolpix (800, 900, 950, 990, 995, 4500) Camera Adaptors

257014



23mm Eyepiece Adaptor,.....\$ 395.00

257016



23.5mm Eyepiece Adaptor, HS900BM (28mm).....\$ 395.00

257018



23.5mm Eyepiece Adaptor, HS900BM (30mm).....\$ 395.00

2504501



C-Mount Adaptor.....\$ 435.00

8102990



Zeiss® OPMI®/Slit Lamp Adaptor.....\$ 1,950.00

8191990



Dual Adaptor: Video Camera & Coolpix Digital Adaptor.....\$ 2,450.00

Additional Mounts Required For 28mm Nikon Coolpix Adaptors - @ N/C

Model

Mounts Required

Coolpix 800, 900, 950, 990, 995, 4500.....	None
Coolpix 880.....	URE2
Coolpix 885, 4300.....	URE4
Coolpix 5000.....	257009
Coolpix 5400.....	URE11
Coolpix 8400.....	URE15
Coolpix 5700, 8700.....	URE12

Sony Cybershot Adaptors

257025



DSC-S950 Adaptor,HS900BM \$750.00

Digital Camera Eyepiece Adaptor for Haag Streit 900BM Style Slit Lamps

**Digital Camera
Eyepiece Kit
for CANON Powershot
1400IS/IXUS 130**

Part # 8001-11



Camera features include:

- 14.1 MP Resolution
- HD video recording; @ 720P
- Mini-HDMI output for playback
- 4 x Optical Zoom

***Compatible with other Haag Streit 900BM style
slit lamps...***

66 Vision Tech – Y25F/Y25J; Appasamy A1A11; Burton 825/835/835/1000; Keeler SL – 16/16 (video); 16ZT; Knosla K-6002; Marco 2B/5; Nidek SL 250/450; Shin Nippon SL –102, 1E, 3F; Takagi SM – 10/30; Topcon SL-3E; Veatch SL – 2V; Woodlyn HR-1s

Adaptor sleeves are available; which allow the Eyepiece Camera Adaptor to mount onto:

Topcon SL 1, 2, 4, 5 & 6 - Part #2504512

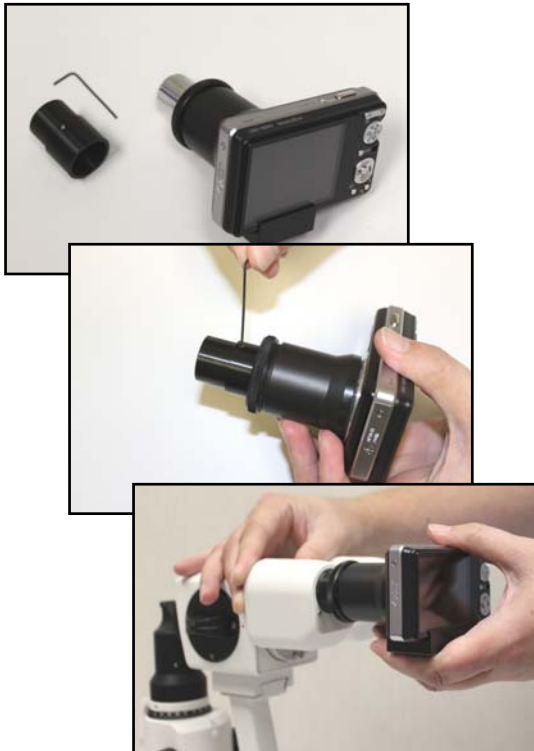
Haag Streit 900BQ - Part #257016001

Haag Streit 900BC - Part #257016002

Reichert XCEL 250/255/400/700 & **CSO** SL 980/990 – Part #2504513

Rodenstock RO3000, 4000, 5000 - Part #2504512

Zeiss (with binocular f=125 push in eyepiece) - Part #257017



Camera Settings...

- Turn camera on, and focus using the camera LCD screen.

- Recommended camera settings:

- 'P' mode



- Flash off

- Macro at infinity (∞)

- White balance @ AWB

- ISO @ automatic

- Optical magnification set at approx $\frac{3}{4}$ zoom (to fill screen)

SLR Digital Camera Adaptors



- 8194101 *Canon EOS Digital Cameras.....\$ 1,750.00
 - 8194102 *Fuji S1 & S2 Pro; Kodak DCS 315,
DCS620, DCS620X, DCS760,
Nikon, Sigma.....\$ 1,750.00
 - 8194103 *Minolta RD 3000.....\$ 1,750.00
 - 8194104 *Olympus.....\$ 1,750.00
 - 8194105 *Pentax.....\$ 1,750.00
- *(Camera not included)

TTI Imaging™

8001-2



Digital Image Capture Package for Microscopes
Slit Lamps and Colposcopes.....\$ 4,250.00

Includes - Canon SLR Digital Camera,
Adaptor, Beamsplitter, LED illuminator,
Footswitch

8001-3

Complete Digital Photo SL.....\$ 10,300.00
(Includes Adaptors, Camera & all camera accessories,
and table)

FS-101

Footswitch for Canon EOS Rebel Type Digital Camera.....\$ 100.00

FS-101 20 D

Footswitch for Canon D Series.....\$ 125.00

LED-1



LED Background Illuminator for
Slit Lamps.....\$ 195.00